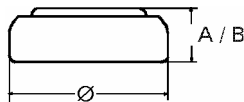


Data Sheet

Type Number 315
Designation IEC SR 67
System Silver oxide / Zinc / Alkaline - Electrolyte



Nominal Voltage 1,55 V
Typical Capacity C 19 mAh
 Load 47 kOhm, at 20 °C down to 1.2 V

Weight (approx.) 0,33 g
Volume 0,09 ccm
Coding..... Date of Manufacturing Month/Year

Temperature Ranges

	min.	max.
Storage	0 °C	60 °C
Discharge	0 °C	60 °C

Dimensions

	min	max.
Diameter (Ø).....	7,75	7,90
Height (A/B)	1,47	1,65

Segment Watch

Main Applications Watch
 Photo
 Electronic

Typical Capacities (at 20 °C)

Discharge Type	Load	End Voltage:	1.2 V
Continuous 24h/d, 7d/w Current [µA]:	47000 Ω	Time:	550 h
		Capacity [mAh]:	19
	33	Energy [mWh]:	29