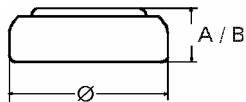


Data Sheet

Type Number 319
Designation IEC SR 64
System Silver oxide / Zinc /
 Alkaline - Electrolyte



Nominal Voltage 1,55 V
Typical Capacity C 21 mAh
 Load 68,1 kOhm, at 20°C down to 1.2 V

Weight (approx.) 0,29 g
Volume 0,07 ccm
Coding..... Date of Manufacturing
 Month/Year

Temperature Ranges min max.
 Storage 0°C 60°C
 Discharge 0°C 60°C

Dimensions min max.
 Diameter (Ø)..... 5,65 5,80
 Height (A/B) 2,50 2,70

Segment Watch

Main Applications Watch
 Photo
 Electronic

Typical Capacities (at 20 °C)

| Discharge Type | Load | End Voltage: | 1.2V |
|----------------|---------|-----------------|-------|
| Continuous | 68100 Ω | Time: | 900 h |
| 24h/d,7d/w | | Capacity [mAh]: | 21 |
| Current [μA]: | 22,9 | Energy [mWh]: | 33 |