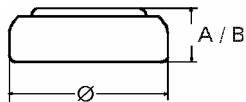


Data Sheet

Type Number 362
Designation IEC SR 58
System Silver oxide / Zinc /
 NaOH - Electrolyte



Nominal Voltage 1,55 V
Typical Capacity C 21 mAh
 Load 39 kOhm, at 20 °C down to 1.2 V

Weight (approx.) 0,4 g
Volume 0,09 ccm
Coding..... Date of Manufacturing
 Month/Year

Temperature Ranges min max.
 Storage -10 °C 65 °C
 Discharge -10 °C 65 °C

Dimensions min max.
 Diameter (Ø)..... 7,55 7,9
 Height (A/B) 1,85 2,1

Segment Watch

Main Applications Watch
 Photo
 Electronic

Typical Capacities (at 20 °C)

Discharge Type	Load	End Voltage:	1.2 V
Continuous 24h/d,7d/w Current [µA]:	39000 Ω 40	Time:	530 h
		Capacity [mAh]:	21
		Energy [mWh]:	32