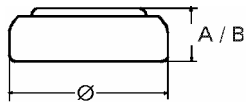


Data Sheet

Type Number 361
Designation IEC SR 58
System Silver oxide / Zinc /
 KOH - Electrolyte



Nominal Voltage 1,55 V
Typical Capacity C 21 mAh
 Load 39 kOhm, at 20°C down to 1.2 V

Weight (approx.) 0,4 g
Volume 0,09 ccm
Coding..... Date of Manufacturing
 Month/Year

Temperature Ranges min max.
 Storage -10°C 65°C
 Discharge -10°C 65°C

Dimensions min max.
 Diameter (Ø)..... 7,55 7,9
 Height (A/B) 1,85 2,1

Segment Watch / High Drain

Main Applications Watch
 Photo
 Electronic

Typical Capacities (at 20°C)

Discharge Type	Load	End Voltage:	1.2 V
Continuous	39000 Ω	Time:	500 h
24h/d, 7d/w		Capacity [mAh]:	21
Current [μA]:	40	Energy [mWh]:	31