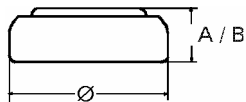


Data Sheet

Type Number 379
Designation IEC SR 63
System Silver oxide / Zinc /
 NaOH - Electrolyte



Nominal Voltage 1,55 V
Typical Capacity C 14 mAh
 Load 68,1 kOhm, at 20°C down to 1.2 V

Weight (approx.) 0,23 g
Volume 0,06 ccm
Coding..... Date of Manufacturing
 Month/Year

Temperature Ranges min max.
 Storage -10°C 65°C
 Discharge -10°C 65°C

Dimensions min max.
 Diameter (Ø)..... 5,7 5,8
 Height A/(B) 2,0 2,15

Segment Watch

Main Applications Watch
 Photo
 Electronic

Typical Capacities (at 20 °C)

Discharge Type	Load	End Voltage:	1.2 V
Continuous 24h/d,7d/w Current [µA]:	68100 Ω 23	Time:	610 h
		Capacity [mAh]:	14
		Energy [mWh]:	22